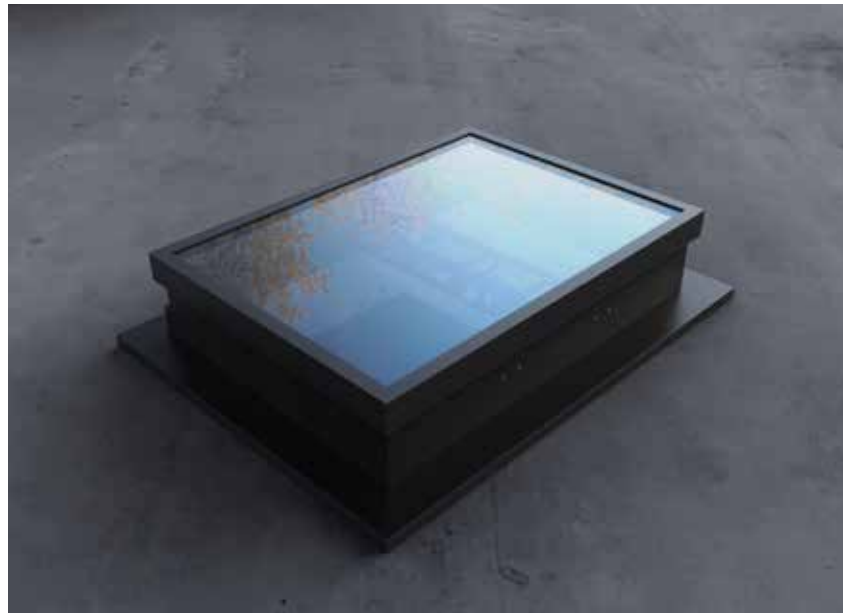


## PRODUCT FEATURES

COVIA TG is a single flap smoke vent suitable for the removal of large quantities of warm air and / or smoke from a building within a short period of time, daily ventilation and natural lighting. Suitable for utilization on various kerbs and domes.

The vents are manufactured according to ISO 9001 quality control standards and comply with the European requirements for NSHEV according to EN 12101-2. The vents are formed from high quality corrosion resistant aluminium to ensure low maintenance requirements and watertightness.

COVIA TG is a perfect solution for preventive fire protection in staircase rooms. Within the range on the minimum and maximum possible construction sizes, the devices can be supplied in variable dimensions.





# COVIA TG

## TYPICAL APPLICATIONS

Suitable for horizontal and inclined roofs up to 15°. May be installed either onto roofs or into barrel vault daylighting systems. Particularly suitable for warehouses, logistics centres, staircase rooms, production environments and industries.

## MATERIALS

Tempered aluminium, sea water and corrosion resistant (EN AW 5754). Corrosion resistant bearings. Sealant applied so that there is no freezing, enabling the equipment to have low air permeability at the same time.

**Note:** aluminum is supplied untreated as standard. Possibility of being supplied with electrostatic painting (in any RAL color).

## DIMENSIONS

**Roof opening width:** from 800 up to 1300 mm.  
**Roof opening length:** from 1000 up to 1700 mm.

*Available dimensions vary depending on the Width/Length ratio.*

## OPENING ANGLE

140°, 150° and 160°.

## CONTROLS FIRE VENTILATION

M24V: traverse with electric motor 24 V.

## ACOUSTIC PERFORMANCE

34db.

## FLAPS

**GLASS** Insulated double glass 30mm.

## BASES

Single aluminium.

Double wall aluminium with insulation.

Double wall aluminium with insulation and TB, thermal break in the aluminium base.

*Note: other non-standard bases available upon request.*

## FLANGES

**S1** Flange for single glass.

**S2** Flange for double glass.

**S3** Flange for roofs, 45° bended.

**S4** Flange for roofs and facades.

**S5** Flange for upstand, 90° bended downwards.

**S6** Flange 90° bended upwards.

**SLS** Flange for skylight connection (different polycarbonate thicknesses).

**SC** Flange for connection with other flange (vents connection, SCM Flange for male connection and SCF flange for female connection).



**S1**



**S2**



**S3**



**S4**



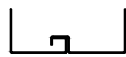
**S5**



**S6**



**SLS**



**SC**



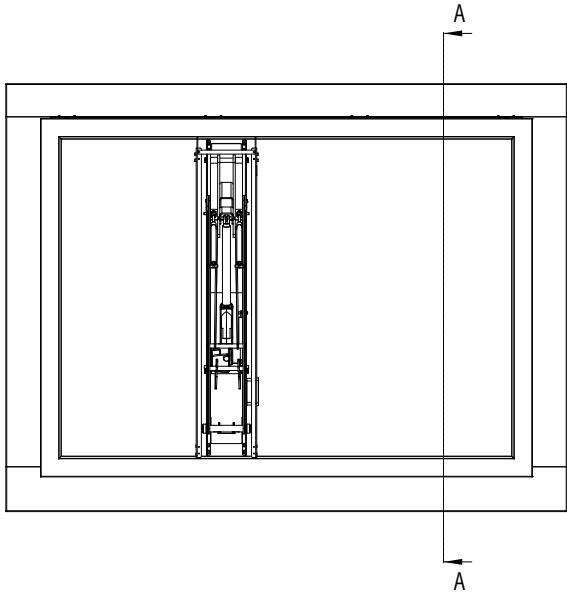
**SCM**



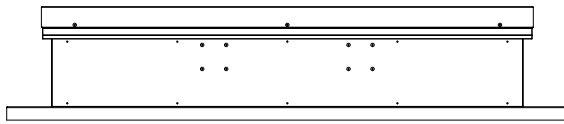
**SCF**

## WEIGHT

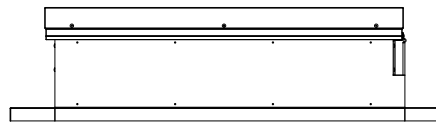
Depends on dimensions and type of infill.



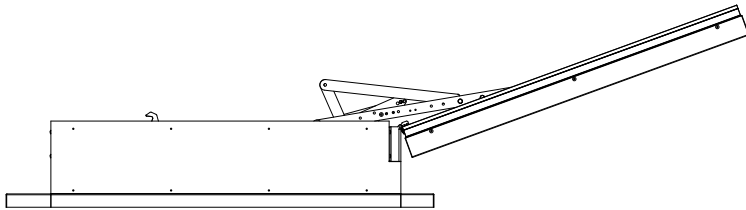
TOP VIEW



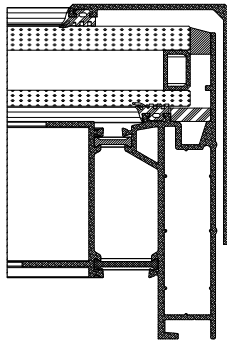
FRONT VIEW



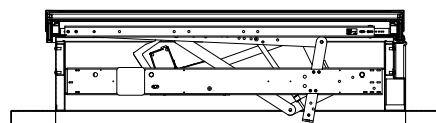
SIDE VIEW



SIDE VIEW  
OPENING SYSTEM



DETAIL 01



SECTION A-A