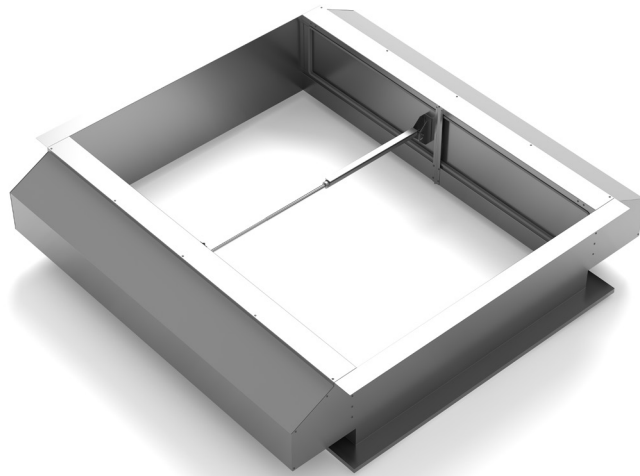
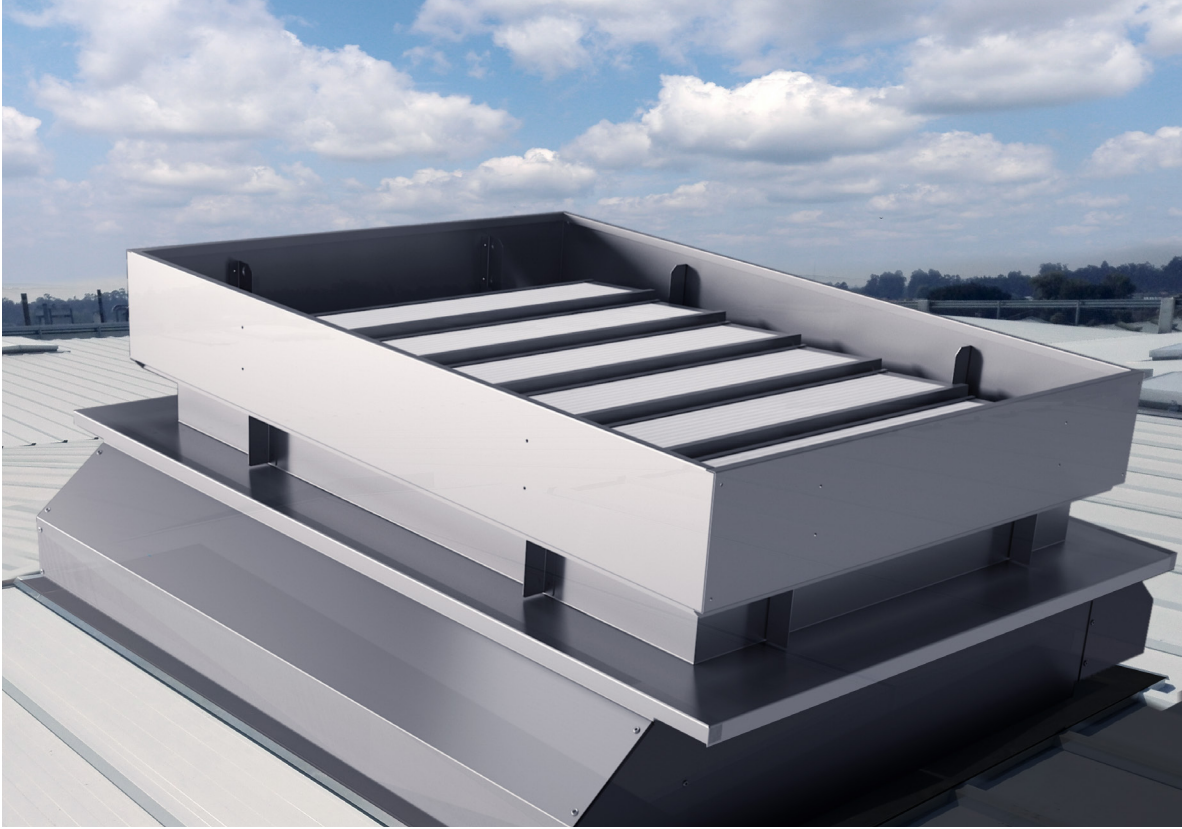


PRODUCT FEATURES

KALON 2 is an environmental ventilation upstand designed to be installed below any smoke and heat ventilation unit or any skylight. It enables the environmental ventilation to continue to operate in any weather. It is equipped with lateral inner flaps to enable weather-protected ventilation. Inner flaps are controlled by an independent system. Various methods of operation using pneumatic or electric actuators are available.

The KALON 2 can be combined with all louvres, flaps and windows ventilators and skylights, such as, DELTA, MONODELTA, VENTRA, TRILUX. Wide range of sizes and heights available giving a choice of ventilation areas.





Kaljon 2

APPLICATIONS

Designed to be installed below any smoke and heat ventilation unit or skylights.

MATERIALS

Tempered AlMg3 aluminium, sea water and corrosion-resistant.
Free of silicones.

Note: the aluminium is supplied untreated as standard.

DIMENSIONS

Any size required is made to measure depending on the dimensions of the upstand or top ventilator.

CONTROLS NATURAL VENTILATION

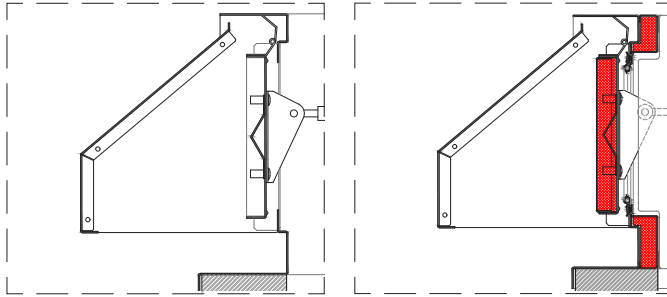
P1: compressed air opening and spring closing.
P2: opening and closing by double-acting pneumatic cylinder.
M24V: electric motor.
M230V: electric motor.

LOUVRES

AL: single aluminium.
AL ISO: double insulated aluminium (20 and 50 mm).

BASES

Single aluminium.
 Double wall aluminium with insulation.
 Bases Height: 500 mm.



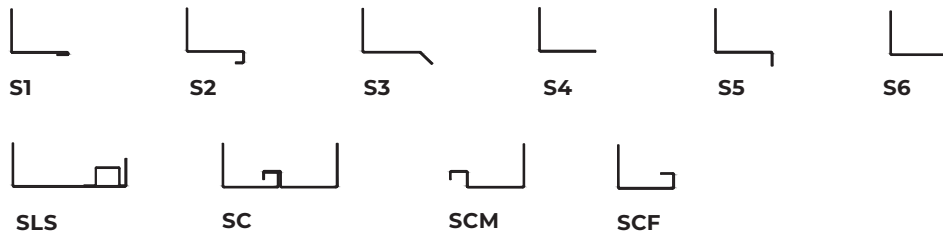
DETAIL 01
 single aluminium

DETAIL 02
 double wall aluminium with
 insulation.

FLANGES

- S1** Flange for single glass.
- S2** Flange for double glass.
- S3** Flange for roofs, 45° bended.
- S4** Flange for roofs and facades.
- S5** Flange for upstand, 90° bended downwards.
- S6** Flange 90° bended upwards.
- SLS** Flange for skylight connection, for different polycarbonate thicknesses.
- SC** Flange for connection with other flange (vents connection). Male or female connection.
- SCM** Flange for male connection.
- SCF** Flange for female connection.

Note: custom flange design and insulated flanges upon request.



WEIGHT

Depends on dimensions and type of infill.

OPTIONS

- Custom dimensions.
- Powder-coated design (any RAL colour).
- Bird or insect mesh.
- Insulated version.
- Hidden control system.

